



Center
for Public
Utilities

Each separate, concurrent course is specifically designed to capture the nuances of that industry and includes the following topics and more!

- Industry Technology, Structure, and Regulation
- Gas Procurement
- Revenue Requirements
- Class Cost-of-Service
- Rate Design
- Key Issues Facing the LDC Industry
- Rate Case Procedures

**REGISTER
ONLINE!**
cpu.nmsu.edu

ENDORSED BY:



The National Association
of Regulatory Utility
Commissioners

THE BASICS

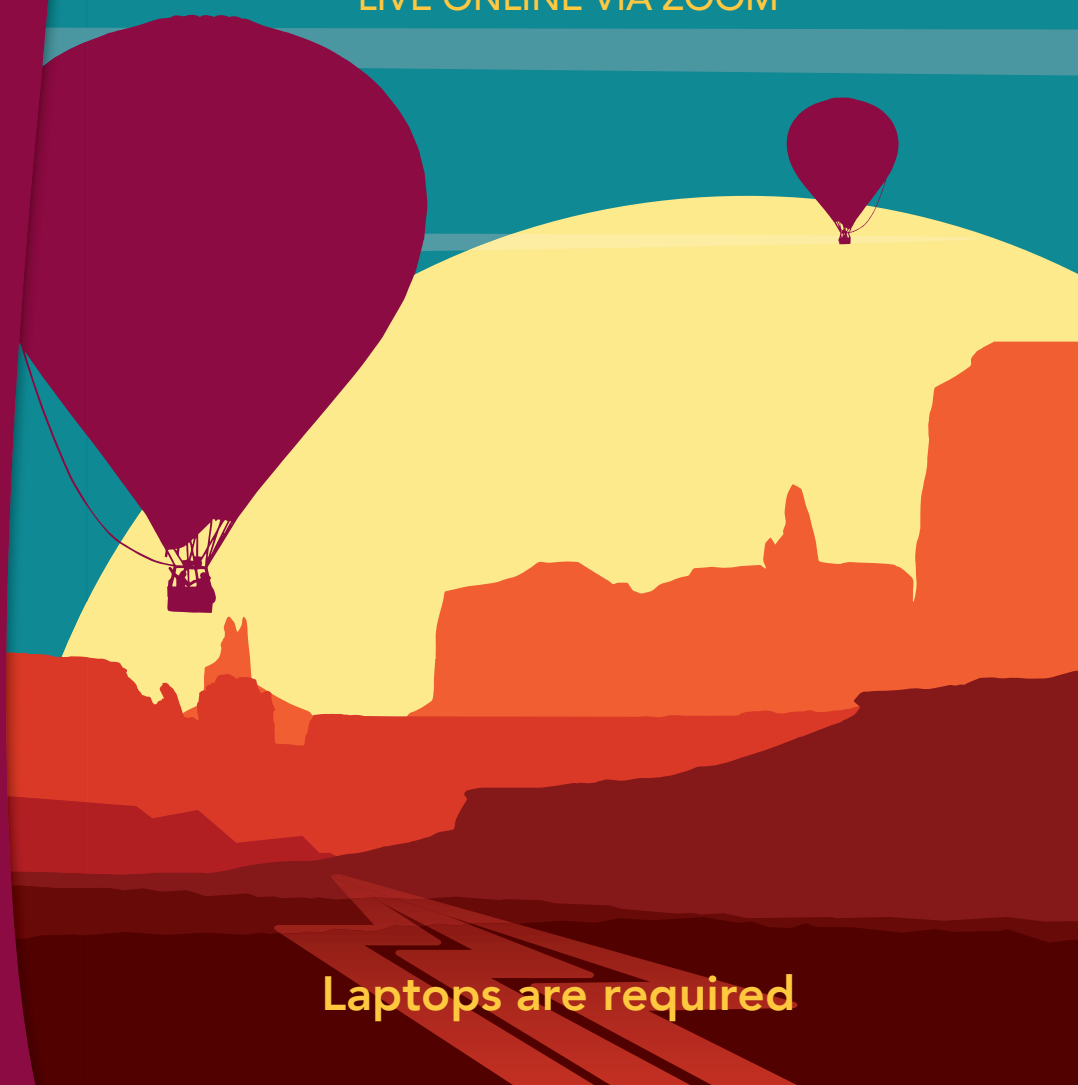
PRACTICAL REGULATORY TRAINING

NATURAL GAS LOCAL
DISTRIBUTION (LDC) INDUSTRY

HYBRID EVENT

MAY 16-20, 2022

SHERATON UPTOWN • ALBUQUERQUE, NM
LIVE ONLINE VIA ZOOM



Laptops are required

NATURAL GAS LOCAL DISTRIBUTION INDUSTRY (LDC)

PLEASE NOTE: LAPTOPS ARE REQUIRED.

If you are unable to bring a laptop, please contact Cindy Blume at cblume@nmsu.edu or 575.646.4876.

MONDAY, MAY 16

6:30 a.m. **REGISTRATION BEGINS**

8:30 – 12:00 **OVERVIEW OF THE NATURAL GAS INDUSTRY**

INSTRUCTOR: Larry Blank

- Moving Gas from the Wellhead to the Burner Tip
- Production, Transmission, Storage, and Distribution
- Infrastructure and System Technologies

LOCAL DISTRIBUTION COMPANIES

- Role of the LDC – structure, regulation, technology, and system operations
- Relationship with Interstate Pipelines and the FERC

FEDERAL JURISDICTION

- The Federal Energy Regulatory Commission (FERC)

STATE JURISDICTION

- State Regulatory Commissions

1:00 – 4:00 **GAS PROCUREMENT, GAS COST RECOVERY, AND GAS COST HEDGING**

INSTRUCTOR: John Olenick

- Interstate Pipeline Services
- PGA Recovery
- Automatic Adjustments
- Performance Based Rates
- Physical and Financial Hedges

4:00-5:00 **THE PROCESS OF DETERMINING REVENUE REQUIREMENTS**

INSTRUCTOR: Tom Stevens

- Rate Base, Expenses, Taxes, Depreciation and Net Operating Income
- Components of the Rate of Return
- The Test-Year
- Adjusted Revenues at Present and Proposed Rates

5:15 – 7:00 **WELCOME RECEPTION**

TUESDAY, MAY 17

8:30 – 12:00 **THE PROCESS OF DETERMINING REVENUE REQUIREMENTS** (continued)

INSTRUCTOR: Tom Stevens

1:00 – 5:00 **REVENUE REQUIREMENTS PROBLEM**

INSTRUCTOR: Larry Blank

WEDNESDAY, MAY 18

8:30 – 12:00 **ASSIGNING COSTS TO VARIOUS CUSTOMER CLASSES**

INSTRUCTOR: Ed Giesekeing

- What is a class cost-of-service study?
- Functionalization • Classification • Allocation

1:00 – 7:00 **TRIP TO NEW MEXICO'S STATE CAPITAL - SANTA FE, NM**

THURSDAY, MAY 19

8:30-12:00 **THE FINAL STEP: RATE DESIGN - RECOVERING ASSIGNED COSTS FROM VARIOUS CUSTOMER CLASSES**

INSTRUCTOR: Ray Blatter

- What is Rate Design, and What Criteria are Used to Determine Rates?
- Components Found in a Tariff
- Types of Rate Designs Used by LDC's Today

1:00-2:00 **THE FINAL STEP: RATE DESIGN RECOVERING ASSIGNED COSTS FROM VARIOUS CUSTOMER CLASSES** (continued)

INSTRUCTOR: Ray Blatter

2:00-5:00 **KEY ISSUES FACING THE LDC INDUSTRY**

INSTRUCTOR: John Gunnells

- Gas Utility Rate of Return
- RNG and Hydrogen Tariff Development
- Effects of Winter Storm Uri
- Gas Policy Developments

5:15-7:00 **FAREWELL SOCIAL**

FRIDAY, MAY 20

(Combined Session for LDC and Electric)

8:00-12:00 **STEP-BY-STEP PROCESS AND PROCEDURES OF A RATE CASE**

INSTRUCTORS: Larry Blank/Cydney Beadles

- The Utility Application, Building the Record, Discovery, Written Testimony - Cydney Beadles
- Cross Examination, Settlement vs. Contested Hearing
- The Final Order and Grounds for Appeals
- Open Meeting Laws and Ex Parte Communication

TOPICS AND/OR INSTRUCTORS SUBJECT TO CHANGE

WHO SHOULD ATTEND

Attendees with less than one year's experience in the regulatory arena and anyone wishing to obtain a basic understanding of the principles involved should attend this course. Commissioners, economists, rate analysts, accountants, attorneys, engineers, public information officers, administrative law judges, consultants, and consumer advocates will all benefit from the basic skills acquired in this course.

WHY SHOULD EMPLOYEES ATTEND THIS RATEMAKING COURSE

The issues confronting Electric and Natural Gas Industries can be very complex and confusing to the employee with newly acquired responsibilities in the area of rates and regulation. These two separate courses will give attendees practical analytical skills needed to understand the topics covered as well as an integrated framework showing how they fit together. Through a combination of lectures, discussion and integrated problems, these courses will give the attendees the analytical skills necessary to be more productive in the changing utility environment.

Each week-long course covers the basics of industry technology, industry structure and regulation, revenue requirements, cost allocation, rate design and rate-case procedures. The electric course is applicable to both vertically integrated utilities, as well as distribution-only electric companies, and the natural gas course is focused on local distribution companies (LDCs).

FACULTY

The Center for Public Utilities is fortunate to have outstanding course instructors, with each having many years of practical experience in the regulatory arena. Not only are these instructors experts in their fields, they have extensive teaching experience and are extremely approachable. Many of these instructors have been with the Center for Public Utilities for over 16 years. The CPU course instructors work collectively as a team and are continually re-evaluating and refining their individual set of materials as well as the overall organization and flow of the entire course. Each member is fully aware of how their own set of materials fits into the overall picture of the course. In this way, each of the week-long courses is truly integrated, which results in the best possible product for the attendees.

Larry Blank, Associate Director, CPU, New Mexico State University

Ray Blatter, Regulatory Manager, Retired

Cydney Beadles, Senior Staff Attorney, Western Resource Advocates

Ed Giesecking, Director - Regulation & Energy Efficiency, Retired

John Gunnells, Manager-State Affairs, American Gas Association

John Olenick, Esq., Director-Gas Supply, Southwest Gas Corporation

Tom Stevens, VP Regulatory, Black Hills Corporation

The Center for Public Utilities (CPU) has been housed in the College of Business at New Mexico State University (NMSU) and has been conducting training courses since 1978. The National Association of Regulatory Utility Commissioners (NARUC) officially sanctions the programs offered by the CPU. The CPU:

- Produces practical training courses, instruction/training materials and out-reach programs directed towards the needs of professional staff at federal and state commissions, utility companies and other stakeholders in the Electric, Natural Gas LDC, Natural Gas Pipeline and Water Industries;
- Produces issues conferences directed towards the needs of upper management and professional staff at federal and state commissions, utility companies and other stakeholders in the Electricity, Natural Gas, Telecommunications and Water Industries;
- Is completely self-funded through the conference fees it charges for its programs and by industry sponsorships;
- Averages about 450 conference attendees per year, who come from all 50 states as well as many foreign countries.



CPU STAFF:

CINDY BLUME

CPU Director & Assistant Professor

CONTACT INFORMATION: cblume@nmsu.edu, (575) 646-4876

LARRY BLANK

Professor, Department of Economics, NMSU; Associate Director, CPU

Larry Blank has over 20 years of practical field experience in the area of public utility policy and regulation. He is currently an Associate Professor in the Department of Economics, and Associate Director with the Center for Public Utilities, at New Mexico State University. Larry teaches graduate and undergraduate economics and public utility classes at NMSU. He previously served as the Manager of Regulatory Policy & Market Analysis with the Public Utilities Commission of Nevada (PUCN) and as an Economist with the National Regulatory Research Institute. As a consultant, Larry has served government agencies, utility companies, and utility customer clients. He has helped draft extensive rules and regulations and has served as an expert in over 150 rate cases.

CONTACT INFORMATION: Larryb@nmsu.edu, (575) 642-6148

DOUG GEGAX

Professor Emeritus, Department of Economics, NMSU

Doug Gegax is Professor Emeritus in the Department of Economics at New Mexico State University – where he started working in 1984. Doug also served as the CPU's Director until July, 2021. He has over 30 years of extensive experience in the areas of revenue requirements, cost-of-service analysis and rate design as well as integrated resource planning, market structure analysis and electricity restructuring. Doug has provided written and oral testimony for federal and state regulatory agencies, as well as legislative committees, on topics such as electric industry restructuring, cost-of-service analysis and rate design.

CONTACT INFORMATION: dgegax@nmsu.edu, (575) 993-9865

CENTER FOR PUBLIC UTILITIES SPONSORS

The CPU Sponsors provide invaluable support to the Center. A Center Sponsor assists in covering expenses associated with conducting courses and conferences. As a sponsor, a designee of their company becomes a member of the CPU Advisory Council; and, they are given the opportunity to provide input on the topics and agenda for the Current Issues conference. If you are interested in becoming a Center Sponsor or would like more information, please contact Jeanette Walter at jeawalte@nmsu.edu

WE WISH TO THANK OUR CENTER SPONSORS LISTED BELOW.

ACORE	Electric Power Association	Public Service Co of New Mexico
AEP - Southwestern Electric Power Co.	Electric Power Supply Association	Resolute Strategies, LLC
American Clean Power Assoc	EPRI	Southern Company
American Gas Association	FutureFWD, Inc.	Southern Gas Company
Anterix	Gillan Associates	Southwest Power Pool
Arizona Public Service Company	ITC Midwest	Spire, Inc.
Arkansas Electric Cooperative Corp	ITRON	Steele & Associates
AT&T Services Inc.	The Jacobs Group	The Gee Strategies Group, LLC
Avista Corporation	Lumen Technologies	T-Mobile
Black Hills Corporation	MISO	Tucson Electric Power & Unisource Energy Services
CenterPoint Energy	NARUC	Xcel Energy
CTIA - The Wireless Association	Natural Gas Supply Association	
Duke Energy	NCTA - The Internet & TV Assoc.	
Edison Electric Institute	Nicor Gas	
El Paso Electric	NTCA	
Electric Power Association	Nuclear Energy Institute	
	ONCOR	

HOTEL INFORMATION

SHERATON UPTOWN ALBUQUERQUE 2600 LOUISIANA, NE, ALBUQUERQUE, NM

CONFERENCE HOTEL RATES (includes full breakfast):

- \$185 single and \$200 double.
- Reservations cut-off date: April 22, 2022

HOTEL RESERVATIONS:

- CENTRAL RESERVATIONS • 1-800-325-3535
- You must mention the NMSU Public Utility Basics

— or —

RESERVE ONLINE: A direct link to the Sheraton Uptown's Conference Rate can be found on the CPU website at <http://cpu.nmsu.edu> under "Upcoming Regulatory Courses" or go directly to our room block for the Sheraton Uptown at:

<https://www.marriott.com/event-reservations/reservation-link.mi?id=1639163231090&key=GRP&app=resvlink>



Sheraton®
Albuquerque
UPTOWN

Rates cannot be changed at check-in or checkout time for guests who fail to identify their affiliation at the time the reservation is requested. Rooms will need to be guaranteed to a major credit card at the time the reservation is made. This is for guarantee purposes only; your credit card will not be charged until you check-out. Please be advised that for any reservation, in which there is a no-show, the first night's room rate and tax will be charged to the form of payment and the entire reservation will be canceled. Reservations may be canceled up to 48 hours prior to arrival without penalty.

GENERAL INFORMATION

TRANSPORTATION: Albuquerque International Sunport ("ABQ") is approximately 9 miles from the Sheraton Uptown. Taxis, rental cars, and ride shares are available at the airport.

COST:

- Company Representatives: **\$1,325**
- Center Sponsors and Government Agencies: **\$1,125**

The registration fee covers all instructional materials presented, receptions, transportation to Santa Fe, and coffee breaks. The registration fee does not include travel, hotel accommodations or meals.

CANCELLATIONS: Full registration refund if an email notification is sent before April 22, 2022, a \$200 service charge will be applied if cancellation notification is sent between April 22nd and May 8th. There will be no refunds after course materials and Zoom meeting invitation has been sent on May 9, 2022.

CLE and CPE CREDIT: It is the responsibility of the individual to apply for CLE or CPE credit in their own state. Attendees must sign in every day and will receive a Certificate of Completion for the course at the end of

the week to include in their application packets. Each individual planning to apply for CLE or CPE credits should contact their state board individually prior to the course and notify the CPU if there are special requirements.

REGISTRATION MUST BE MADE IN ADVANCE:

Registration and payment online is preferred. To reserve a space choose one of the following:

- Online: cpu.nmsu.edu or <https://cpunmsu.irisregistration.com/Form/may22basics>
- Call 575.646.4876
- Email registration form to Cindy Blume at cblume@nmsu.edu
- Mail in completed registration form to the address on the form.

FOR MORE INFORMATION CONTACT THE CPU AT:

Cindy Blume at cblume@nmsu.edu or call 575.646.4876

May 16-20, 2022

Laptops are required for this course. If you are unable to bring a laptop, please contact Cindy Blume at cblume@nmsu.edu

Name _____

Name on Badge _____

Title _____

Organization _____

Address _____

City, State, Zip _____

Phone _____ Fax _____

Email _____

☐ Payment enclosed ☐ PO # _____

☐ MC ☐ Visa

☐ Discover ☐ American Express

CC # _____ Exp _____

REGISTRATION FEE:

- ☐ \$1,325: Company Representative
- ☐ \$1,125: Center Sponsors and Government Agencies

ONLINE:

<https://cpunmsu.irisregistration.com/Form/may22basics>

Master Card, Visa, American Express, Discover, and ACH payments are accepted by NMSU. 2.75% fee will be added.

BY CHECK:

Payable to: NEW MEXICO STATE UNIVERSITY

MAIL CHECK TO:

Center for Public Utilities
MSC- 3MPD
NMSU
P.O. Box 30001
Las Cruces, NM 88003-8001

ONLINE BY CHECK:

ACH Payments:

<https://cpunmsu.irisregistration.com/Form/may22basics>

There are no additional fees for payment by check or invoice.